



Weekly Update

This email is intended for Coordinators, Committee and Board Members of Family Promise in Tulsa County. Please refrain from forwarding this email in its entirety and only copy and paste pertinent information that needs to be shared.

CURRENT CENSUS

PROGRAM	CURRENT FAMILIES	INDIVIDUALS	YTD FAMILIES	YTD INDIVIDUALS	YTD BED NIGHTS
SHELTER	6	21	20	84	1,208
FRESH START PROGRAM	families in saving phase (5)	N/A	3	9	N/A
PREVENTION/DIVERSION		0	0	0	N/A
TOTALS	6	21	23	93	1,208

Average length of stay as of 10/18/23: 60 days



HOSPITALITY SCHEDULE



This Week (October 15-October 21) No Host Scheduled

Next Week (October 22-October 28) Christ Church United Methodist

On Deck (October 29-November 2) No Host Scheduled



It has been a very busy couple of weeks at FPTC. I am more than happy to share some of the highpoints. A single mom and her teenage daughter graduated and moved into their own home, our board of directors and I met with our FP National regional director, Lindsay to discuss survey results and talk about FPTC's future, and today, we moved in a single father with three young boys.

Single Mom Success Story...

I know you do not get the privilege to see your generosity and compassion in action, however, I want you to know that YOU are truly making a difference in the lives of so many families in our community. A little over 60 days ago we had a single mother and her teen daughter move into the program after experiencing hardships and financial setbacks. The mother tried camping with her daughter after being temporarily displaced and that unfortunately went horribly wrong. This momma reached out to numerous agencies and was told time after time that no one had anything available. Although we had no immediate availability, we talked about options and placed her on our wait list. This mom was faced with the reality of giving her daughter to her father and sleeping in her car and was quickly running out of time and options. Fortunately, we were able to bring her in for an interview and within few days, we welcomed her and her daughter home.

While in the program this family was able to save money and had stability that enabled them to take care of a lot of outside issues that were hindering her ability to secure stable housing. This mom graduated our program and is now in a home of her own with the help of our Fresh Start Pilot program (more information about this exciting program coming in future updates). This mom stated, "I don't see any way that we would be where we are now without the ability to have a safe and comfortable place to call home and the comfort of knowing I do not need to worry about myself or my child's safety. We're very grateful that God put you (FPTC) in our path." ~ FPTC Graduate.

Survey Results...

Thank you to everyone who completed the survey. It provided some good insights on how FPTC can grow and what we need to focus on moving forward. Overall FPTC is performance is outstanding compared to other affiliates in our region and nationwide for being only five years old. Of course there is always room for improvement and expansion of services. As I suspected shelter was the number one service selected and the most important option with all of the survey takers. A close second was prevention and although we have assisted minimally in this area, we would love to expand this service and provide additional help to families in our community.

Continued...

Survey Says...Who Do We Serve?

Survey Responses: Who Do We Serve?



homeless families **families** homelessness
Families with children housing

Thank you to everyone who completed the survey. It provided some good insights on how FPTC can grow and what we need to focus on moving forward. Overall FPTC performance is outstanding compared to other affiliates in our region and nationwide for being only five years old. Of course there is always room for improvement and expansion of services. As I suspected shelter was the number one service selected and the most important option with all of the survey takers. A close second was

prevention and although we have assisted minimally in this area, we would love to expand this service and provide additional help to families in our community.

Single Fathers Need Help Too...

We had the privilege of moving a single father and his three children into one of your units this morning. The family moved to Tulsa after the death of his wife and the mother of his children. The family was living in an unsafe environment with no heat in the winter and no air-conditioning in the summer. He consistently requested for the heat/air system to be fixed as he continued to pay rent, however, that never happened and instead he received an eviction notice and was forced to leave their home and to make things worse, the apartment complex placed a \$3,000 fee on top of his eviction.

The dad has a good job, however, due to the current housing crisis, lack of affordable housing, the eviction and fees, he was unable to find a new place to live so they were forced to move into a hotel. For almost a year the family has moved from hotel to hotel trying to find the best rates as the dad works to pay off his eviction. When Shannon, our amazing case manager, offered him the position after his interview, he was a little apprehensive and asked how much it was going to cost. Shannon proceeded to tell him that his stay at FPTC would cost nothing and that we were here to help him, give him a safe place to call home, provide all the essentials, and allow him to save money, he was in complete shock and did not know what to say or do. He stated, "you cannot believe how many places I called and everyone told me they help women only." That is until Family Promise of Tulsa County welcomed him home.

The move in was truly heartwarming. When Shannon handed the key over to the teenage son and allowed him to open the door, he and the father was so excited. The kids immediately checked out the entire apartment, picked their own beds, looked in the cabinets and was so happy to see plates. The young boy stated, "our hotel room was the size of the living room. We have not had our own bed and dishes in a really long time." The entire family was just kind of in shock and unable to adequately process that this was their home. The dad was so excited to see a washer and dryer and could not wait to move in.

Thank YOU for making moments like this happen. We cannot change lives without your support. Thank you for giving this family a home.

SURVEY RESULTS

The Numbers: Family Promise of Tulsa County



Family Promise of Tulsa County started serving families in 2018



1,753 individuals served since opening



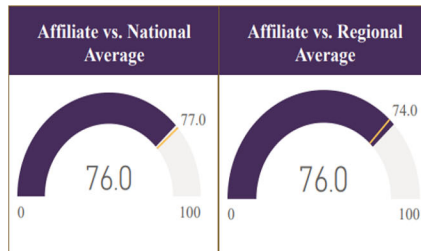
Programs: prevention, diversion, shelter, housing



Family Promise of Tulsa County Health Metric Highlights

2022 - 2023 Guide for Affiliate Health

While these metrics serve as a guide for 2023, they reflect your Affiliate's reported census data from 2022. The numbers are not a grade or reflection of effort, but rather a tool to evaluate programs, outcomes, and operations. The numbers are meant to open discussions about opportunities for growth within your Affiliate. Your Regional Director can provide context and help facilitate discussions about growth.



Opportunity for Growth Growing/No

Eviction Prevention

Shelter Diversion

Shelter Program

Shelter Eligibility

Former Guest Tracking

Shelter Outcomes

Housing Program

Stabilization Program

Individuals Served

Meets Expectations Stable

Priority Staff Positions

Board Members

Board Member Giving

Board Committees

DEIA Training

TIC Training

Partner Organizations

Volunteers

Areas of Success High Performing/Yes

Months in Reserve

Compliance/Disclosure

Financial Practices

Risk Management

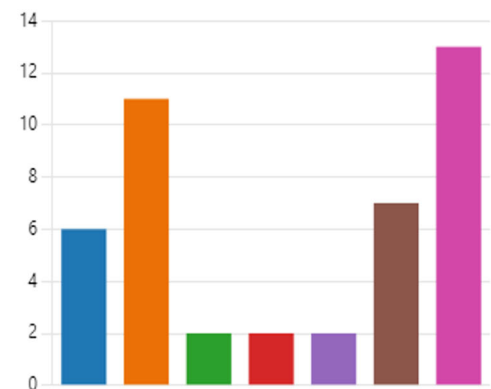
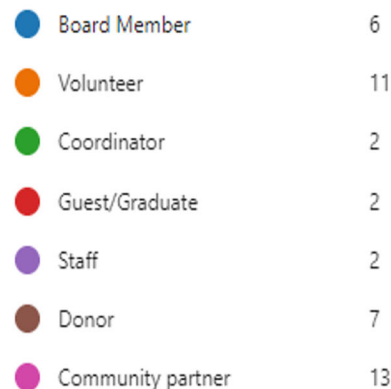
Financial Review

Total Expenses

Diverse Funding

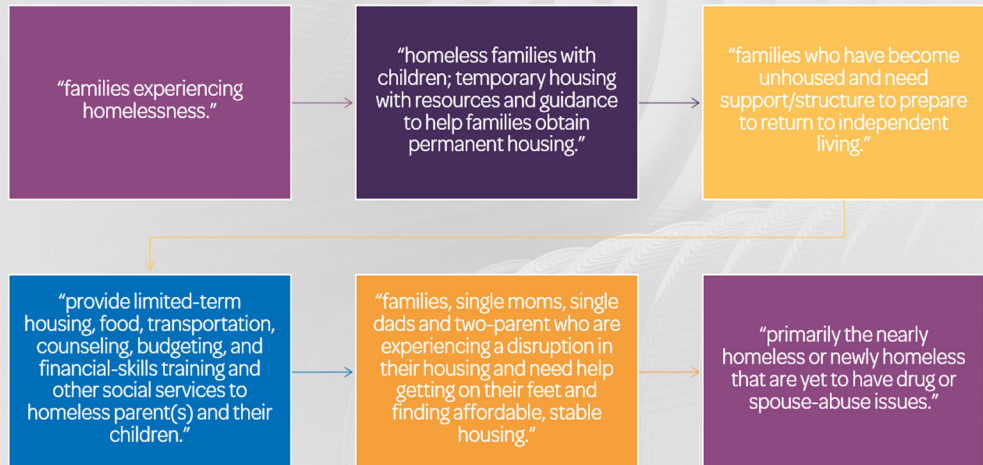
Fundraising Plan

Survey Response: Roles

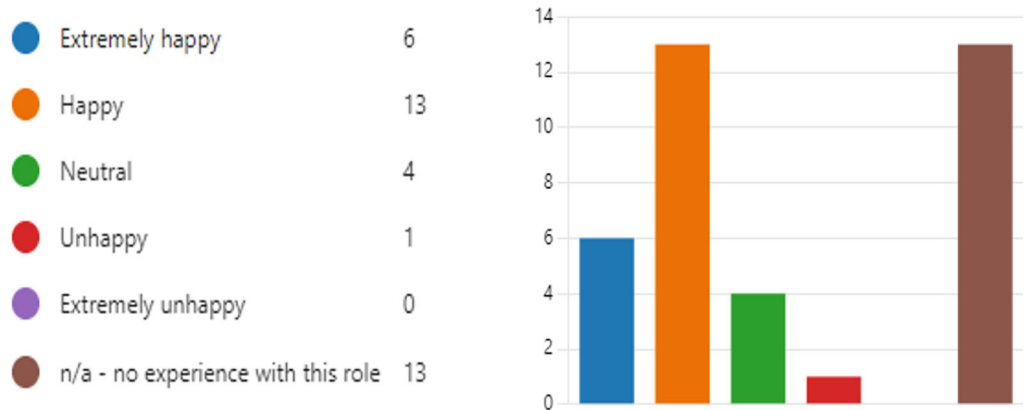


SURVEY RESULTS

Survey Responses: Who Do We Serve?



Survey Responses: Current-Model Satisfaction

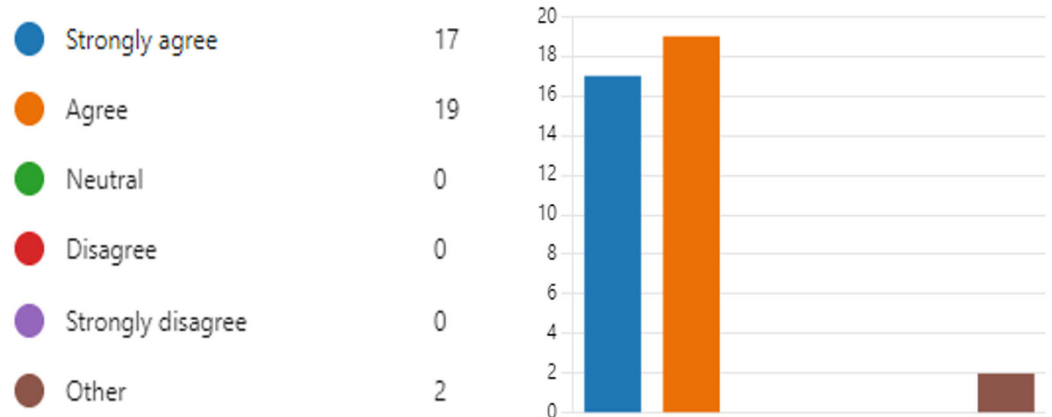


Survey Responses: Volunteer Opportunities



SURVEY RESULTS

Survey Responses: Meeting Expectations



Survey Responses: Meeting Expectations Feedback

"I have never heard of this program until 9/20/23. I have been providing Social Work-related services in Oklahoma for over 10 years, primarily in Tulsa County and have never heard of this program. So that is why I stated "unsure" because I have no idea what you all do or how long you all have even been up and running."

"Improved marketing could be helpful in getting the word out about services. If not already established, it seems like this would be a great opportunity for partnership with Housing Solutions to utilize partner congregations for severe weather/short term/emergency shelter options."

Survey Responses: Future Focus Priorities

- 1 Shelter – Transitional housing f...
- 2 Prevention – FPTC provides on...
- 3 Stabilization – Goods, services, ...
- 4 Diversion – Assist families expe...



SURVEY RESULTS

Survey Responses: Expanding Services



"Help navigating public help with housing and utilities."



"Group meetings or counseling services for families who find themselves there."

Survey Responses: Top 3 Strengths

"Consistent intervention and continuing exploration of Tulsa's housing needs and fulfillment."

"Staff are passionate and committed, ED thinks creatively to do things differently when needed, like shifting during the pandemic."

"Community activation, transparency and giving people a way to connect in small ways."

Survey Responses: Top 3 Strengths

"Committed staff, solutions to broad community challenge, compassionate approach."

"Goal driven to help the community, staff support of guests, housing for families, especially children, to not feel displaced during times of displacement."

"We keep children off the streets, it is grass roots, it takes advantage of underused facilities."

SURVEY RESULTS

Survey Responses: Top 3 Strengths

housing for families board and staff support of families
parent families needed children
shelter for families community **families** **staff** dedicated staff
family unit good people Program families in need
Family care Staff support types of families family assistance

Survey Responses: Top 3 Growth Areas

"Volunteer engagement, expansion to serve more families."

"1. Community awareness of their good work. 2. I wonder if connection to congregations has waned with the current model. 3. more congregations involved."

"1. Resources/fundraising. 2. More active board. 3. Additional property"

Survey Responses: Top 3 Growth Areas

housing for families board and staff support of families
parent families needed children
shelter for families community **families** **staff** dedicated staff
family unit good people Program families in need
Family care Staff support types of families family assistance

SURVEY RESULTS

Survey Responses: Financial Support



Survey Responses: Decision to Give



"I absolutely love the work you're doing."



"Junk mail ask with lots of other asks."

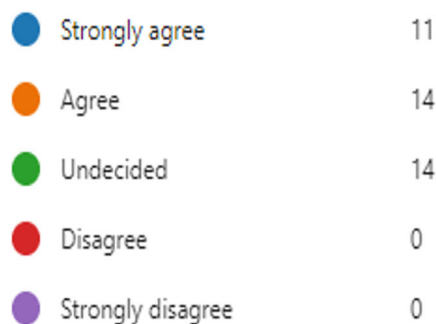


"I believe in the mission of keeping families together while they are working on a solution to their temporary living situation."

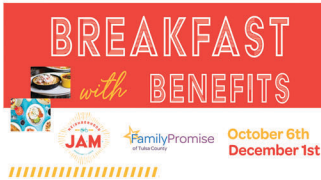


"Not financially stable myself."

Survey Responses: Capital Campaign Support



★ COMMUNITY SUPPORT OPPORTUNITY



Thank you to everyone who attended the Breakfast with benefits on October 6th. It was a very steady crowd all morning. We do not have the amount of the generous donation as of yet, however, we will gladly share once the information is available.

A very special thank you to everyone who used your target points and voted for Family Promise in July, August, and September. Family Promise placed second in the voting coming behind the OKC YWCA. The votes generated a donation of \$2,089 dollars. Thank you for voting!



I had the privilege of speaking at the Tulsa Christian Businessmen's monthly meeting on Tuesday and was awarded a generous donation of \$1,000. We are truly grateful for their support. When I explained we assist single fathers in addition to single mothers and two parent families, I was given a standing ovation by a couple of business owners in the crowd. Helping single fathers is so important to our work and we are blessed to offer housing to fathers in our community.

Times are tough for almost everyone right now. It is especially difficult on the families who need our help. With the cost of food, rent, gas, utilities consistently on the rise families are struggling to get by. The need for our services continues to grow as do the expenses to assist the families we serve. This October and November Family Promise of Tulsa County is holding a HOPE for a Brighter Future non-even to hopefully raise \$30,000 and support our mission of ending homelessness... one family at a time.



We need your support in spreading the word about our non-event. Would you please share the information about HOPE for a Brighter Future in your congregation bulletin?

Please share our event on FB to your family and friends and help us meet our goal of \$30,000. No donation is too large or too small. Every dollar makes a difference in the lives of the families we serve. If you would like information in a specific format, please reach out to Tina at director@familypromisetulsa.org and I will be happy to provide any promotional material you need. Thank you for your support.





Give us your ideas...

Do you have an idea for a fun community event? We would love to hear your ideas. Please feel free to reach out to Tina at 918-392-4969 or director@familypromisetulsa.org. All ideas are welcome.

We would love to have a community event that would bring everyone together for a casual evening of fun. We are throwing out a couple ideas including a potential chili cook off. We are just in the beginning stages of planning so keep an eye out for additional updates.



Aldi Gift Cards (\$25 & \$50)

Families often enter our program without the necessary resources to obtain food and although our amazing congregations provide food and or gift cards to FPTC families staying at the COC, we have additional families at another location. We like to have a few Aldi's gift cards available just in case a family does not have resources to get them by until we can get the support they need. If you would like to help feed a family in an emergency, please bring an Aldi card or cards to our office at 1616 N. Gilcrease Museum Road – White Cottage, or let us know and we will gladly schedule a time to pick them up.