



FPTC Updates

CURRENT CENSUS

PROGRAM	CURRENT FAMILIES	INDIVIDUALS	YTD FAMILIES	YTD INDIVIDUALS	YTD BED NIGHTS
SHELTER	5	21	8	21	1,968
FRESH START PROGRAM	families in saving phase (5)	N/A			N/A
PREVENTION/DIVERSION	19	51	19	51	N/A
TOTALS	4	72	27	72	1,968

Average length of stay as of 3/14/24: 98 days



HOSPITALITY SCHEDULE



This Week (Mar 10th-16th) Open Week

Next Week (Mar 17th-23rd) Christ Church on Harvard

On Deck (Mar 24th-Mar 30th) Christ Church Episcopal



UPDATES FROM TINA



What's Happening at FPTC...Family Updates

We currently have 5 families in our apartment shelter program and a they are all doing fantastic. They are all employed, the children are in school or daycare, and the families are saving and working toward self-sufficiency. One of our newer mommies is simply overwhelmed and so grateful for the amazing meals and gift cards she has received from day one in our program. She stated, her faith has been restored and she feels the love and support for herself and her babies. I have stated before, it is not just a meal or a gift card. It is HOPE. Thank you for showing our families love. You may not see it but, each and every one of YOU are making a difference.



A very recent graduate sent me a photo of her precious little girl on the last night in our program. They are starting their next journey and are so grateful for our care, compassion, and support.

"Family Promise of Tulsa County is a haven for the weary, a safe place to call home, a wonderful place that provides care and comfort to our children. Thank you for everything." - FPTC Graduate

Thank YOU for providing hope, help, and support

Agency Updates...Future Begins at Home

We met our matching goal. Thank YOU for helping us turn \$5,000 into \$20,000 to support families in our community. We are so grateful for everyone who donated to help us bring the desperately needed services to families in our community. YOU are making a difference in the lives of children and families. Thank You!

But WAIT...we still need your help! The need for prevention/diversion services far exceeds the \$20,000 raised so please consider making a tax-deductible donation in support of the Future Begins at Home program and partner with us to keep even more children in their homes. Please share our Facebook, Instagram, and X (twitter) pages with your family, friends, members and help us spread the word about this worthwhile program. Every dollar makes a difference.

Continued....

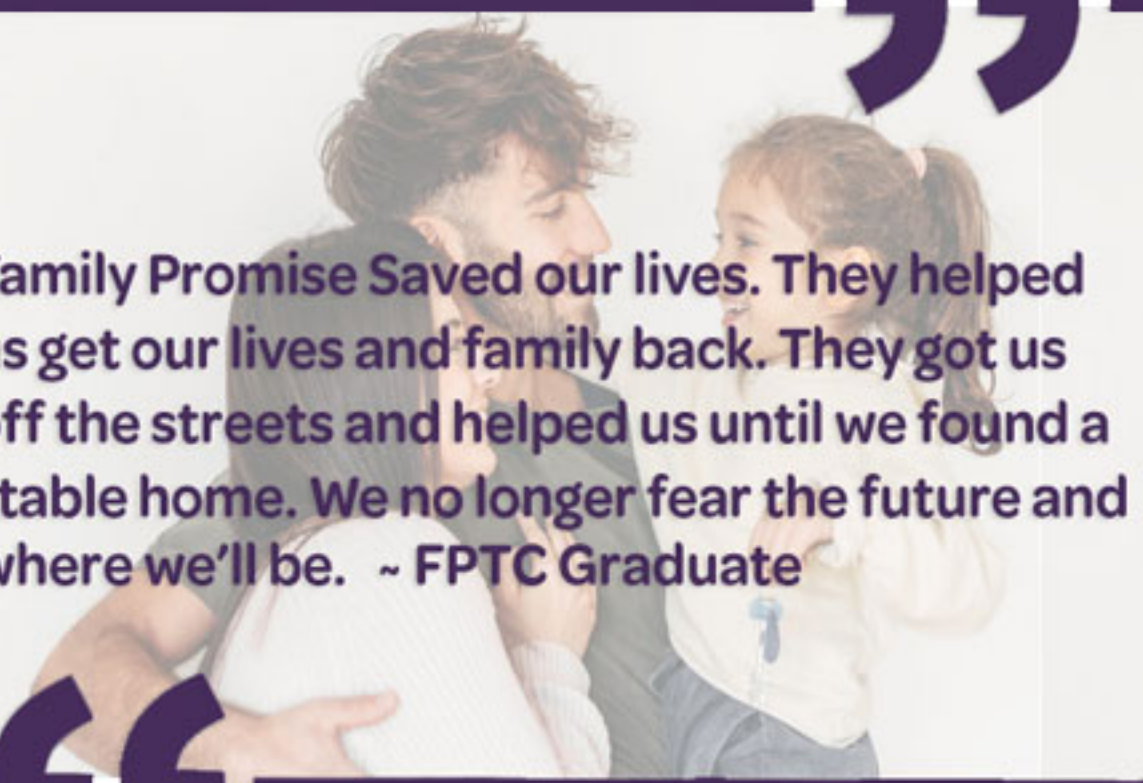
HELP CAME JUST IN TIME!

FPTC assisted a single mom with three children on her final day of a five-day notice. The property was in the process of filing the eviction in court when FPTC intervened. Our amazing case manager, Shannon, went above and beyond and personally hand delivered the check to the property manager and quite literally stopped the eviction process.



This momma was just a little short on her rent due to an unforeseen bill and is beyond grateful for our one-time financial support. She has an overwhelming sense of relief that her and her children can now stay in their home. Thank YOU for making this moment possible.

This is just one of the amazing stories that is positively impacting families and children in our community. At Family Promise of Tulsa County, it's another fantastic day of preventing homelessness and supporting families in our shelter program. Together, we can make a difference.

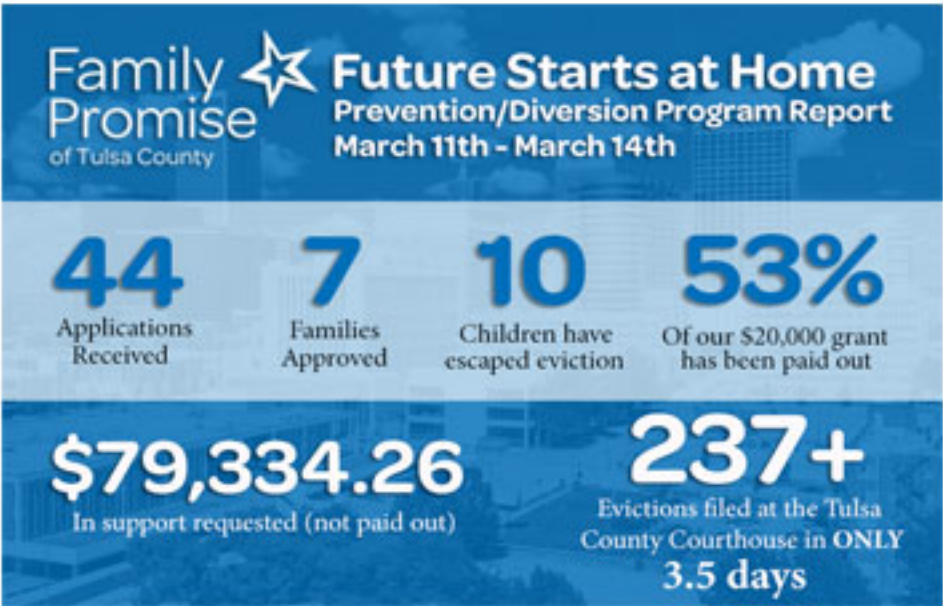


Family Promise Saved our lives. They helped us get our lives and family back. They got us off the streets and helped us until we found a stable home. We no longer fear the future and where we'll be. ~ FPTC Graduate

Continued....

The Future Begins at Home application portal was closed at noon today and will reopen on Monday, April 8, 2024. The need for prevention/diversion services in our community is desperately needed. Below are two infographics that show the overwhelming need for this service. We would love to have the capacity and funding to serve every family, however, you will see the amounts requested in the short time our online applications were open is not possible at this time.

I am working diligently to secure additional funding from community foundations, businesses, and individuals to keep this program going. We know that \$20,000 will not serve the entire need, however, we are grateful to help the families we can. Thank you to everyone who helped us meet our \$5,000 matching goal. We appreciate your support.





Do you know of a group or congregation that would like to hear about the amazing work we are doing with families in our community? Would you like me to visit your congregation or Sunday school classes and provide updates on Family Promise of Tulsa County? If so, please feel free to reach out to me at 918-392-4959 or by email at director@familypromisetulsa.org and I will be happy to schedule a day/ time to visit.

Do you have a passion for fundraising and helping with event fundraisers? If so, I would love the opportunity to speak with you. We are ALWAYS looking for ways to spread the word about FPTC and find ways to support our amazing mission of ending homelessness...one family at a time. If you are interested or know someone who would like to help, please let me know.



FPTC has a few open weeks with no congregational support, we would like to have a few Aldi or Walmart cards available for new families or for weeks that we do not have support. If you would like to help us fill the gap, please let us know. We are happy to stop by for a visit and pick up any generous donation.

Aldi & Walmart Gift Cards (\$25 & \$50) Cleaning Supplies



Tina will be out of the office on Friday, March 15th - Monday, March 18th. If you need anything while she is out, please reach out to shannon at casemanager1@familyproisetulsa.org.